





Building the right solution for your application

We understand that every project and application has unique attributes at times requiring a customized solution. We will work closely to understand your requirements, offer solutions and deliver a cost effective, high quality precision component to meet your timelines.

We manufacture:

- Gears – Spur / Helical / Straight Bevels
- Worm – Wheel Sets
- Racks & Pinions
- Splines / Serrated Shafts & Hubs
- Timing Belt Pulleys
- Chain Sprockets
- Geared Sub Assemblies

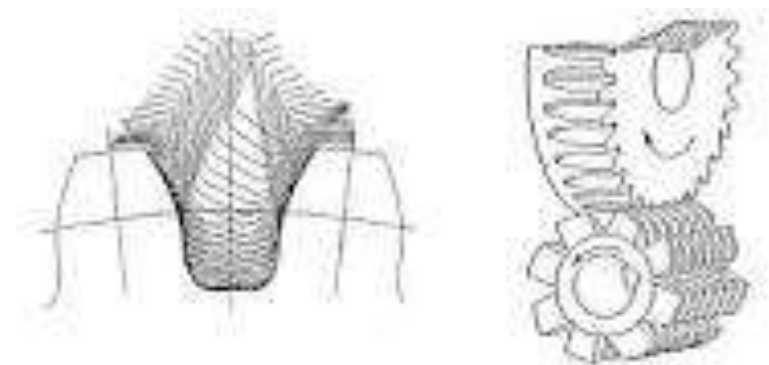
Application:

- Textiles
- Plastics
- Packaging
- Elevators
- Machine Tools
- Infrastructure

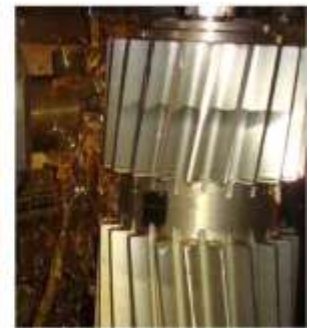
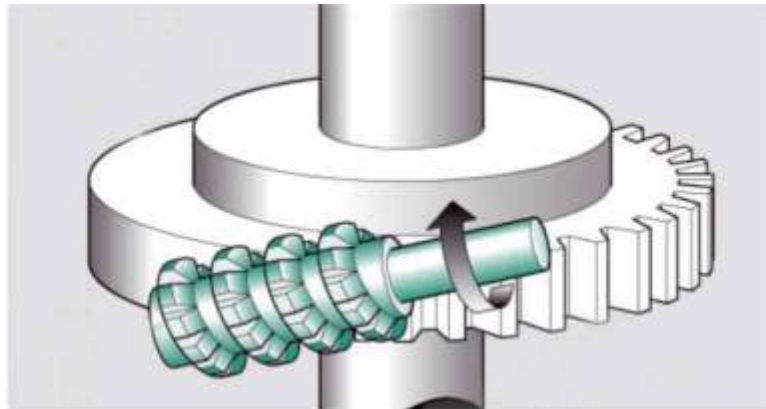


Manufacturing Processes:

- Gear Cutting : Gear Hobbing
Gear Shaping
Thread Milling
Straight Bevel Generating
- Grinding : Gear Profile Grinding
Thread Grinding
Cylindrical & ID/Face Grinding
- Broaching : Splines & Keyway
- CNC Machining : Turning & Milling
- Key Seating , Band saw, etc.

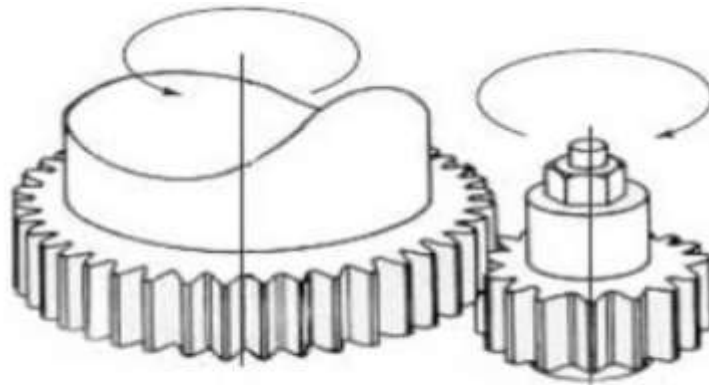


Manufacturing Process : Gear Hobbing



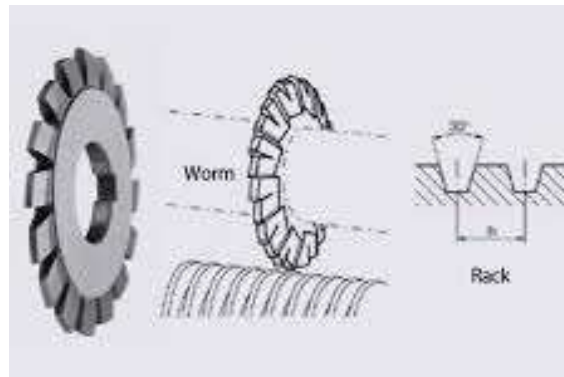
Manufacturing Process : Shaping

Gear

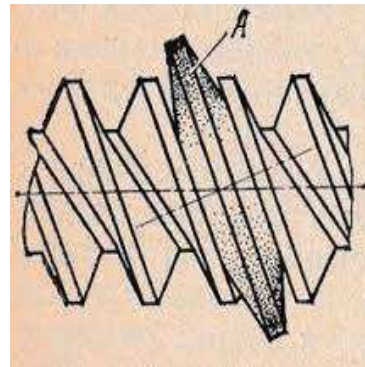


Manufacturing Process : Milling

Thread



Manufacturing Process : Grinding



Manufacturing Capability:

Machines	Capacity Module	Capacity Max.O.D.
Hobbing Machines – 9 machines	12 Module	Ø1300mm
Gear Shapers - 5 Machines (With Rack Cutting Attachment)	8 Module	Ø500mm
Thread Milling Machines-3 Machines	10 Module (With Hob head)	Ø200 x 1000mm Long
Straight Bevel Generator – 2 Machines	6 Module	Ø300mm
Auto Cycle Milling – 1 Machine (for Bevel Gears & Spline Shafts)	5 Module	Ø125mm
Thread Grinding - 1 Machine	25 Module	Ø200 x 1000mm Long
Gear Grinding - 2 Machines	16 Module	Ø800mm
CNC Turning, CNC VTL, VMC, Key way Milling, Key Seating, Broaching, Cylindrical Grinding, etc. to support our core Gear Manufacturing Activities.		

Manufacturing Capacity:

Gear Type	Module	Max.O.D.
Spur – External	0.3mm to 12mm	1300mm
Spur – Internal	Up to 8mm	800mm PCD
Spur – Rack	Up to 8mm	1200mm Long
Helical	0.3mm to 12mm	1300mm
Straight Bevel	Up to 6mm	300mm
Worm Wheel (Tangential or Radial Feed)	0.3mm to 12mm	1300mm
Worm	0.75mm to 10mm	200mm (To 1000mm Length)
Spline Shafts	0.5mm min.	200mm (To 1000mm Length)
Sprocket	1.25" CP Max.	1300mm
Timing Belt Pulleys	Wide range of Pitches	1300mm

Gears – Spur, Helical, Bevel



Gears – Splines – Serrations External & Internal



Spur Gear with Crowning for Flexible Couplings



Spline & Serrated Shafts



Spline & Serrated Shafts



Worm Shafts



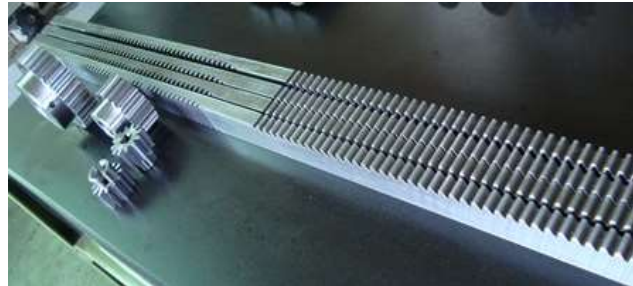
Worm & Wheel sets



Timing Belt Pulleys



Racks & Pinions



Worm Gear Assembly With Flexible Axis Output



Quality Control:

- Apart from Vernier Calipers, Micrometers, Gear Tooth (Flanged) Micrometers, Height Gauges, Bore Dial Gauges, Hardness Tester, we have below listed equipment for inspection of Gears:
- Gear PCD Concentricity Tester
- HOFER EFR-S630 Lead & Involute Gear Tester
- HARBIN Lead & Involute Gear Tester
- PARKSON 15 Roll Testers for Spur, Bevels & Worm-Wheel set Up to 400mm CD
- Lead Measuring Machine - Goulder Mikron.
- 3D CMM
- Various Plug/Ring/Snap/Spline/Thread Gauges according to job requirement.
- Raw materials are tested for its Chemical as well as Physical properties as per requirement and data are preserved with unique IDs. Job Cards are prepared for every batch/lot before manufacturing cycle. Stage & Final inspections carried out and data preserved with respective job cards. Jobs/Lots are identified with unique ID nos. for traceability

Quality Control: Surface Treatment-Thickness Checking



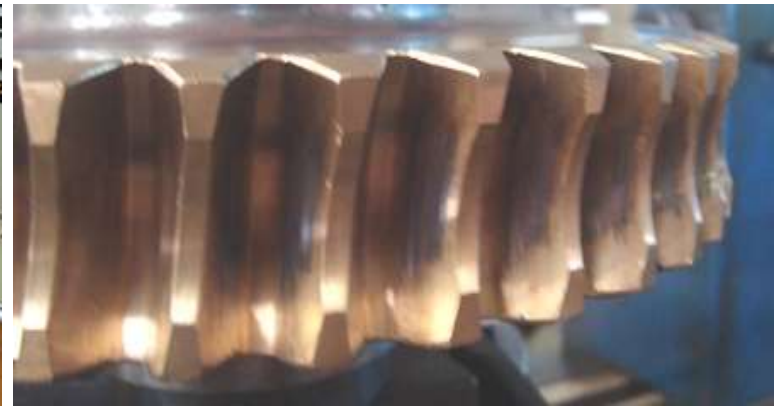
Quality Control: PCD Runout & Roll Testing



Quality Control: Lead & Profile Checking of Gears

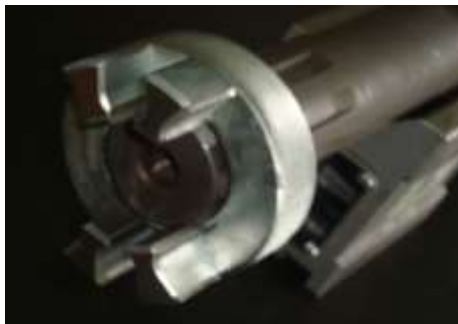


Quality Control: Worm & Wheel Inspection



Quality Control

Inspection of Spline Shafts



Challenging Jobs....





R & D Jobs

Gear Subassembly for
Aircraft Fuel Pump

COST EFFECTIVE QUALITY



R & D Jobs

Actuator Subassembly for
Aircraft Application



R & D Jobs

Pump Gears for Agro Application



Timing Gears for Screw Pumps

(Our customer export as subassembly to Sweden,
Netherlands & USA)





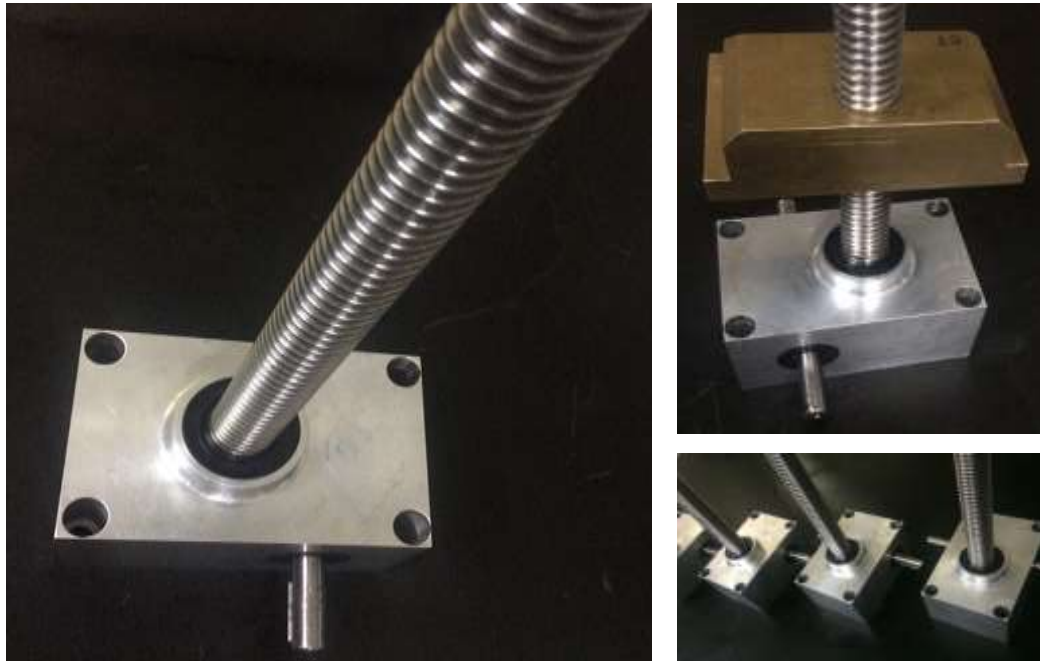
Gears for Pumps Application

Duplex Worm & Wheel sets (Supplied to IMO Pumps, Sweden)





Splined Shaft for Gearless Elevators



**Watertight Actuator Gearboxes for Pipe
extrusion plant**

Worm Gear Block & Bevel Gear Assembly for Electrical Industry



Drive Shafts & Coupling Shafts

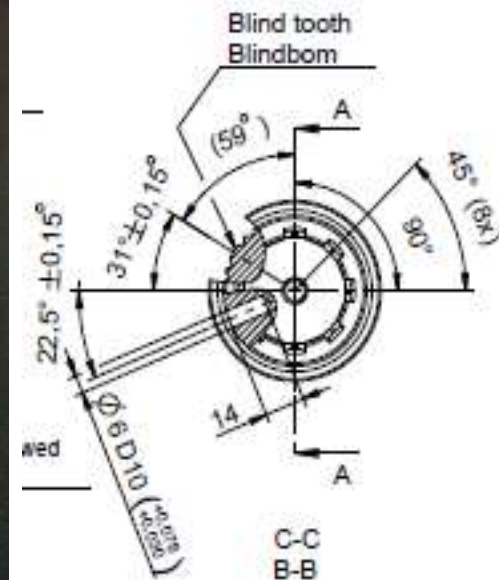


Long Splined Shafts for customers at India, China and Sweden

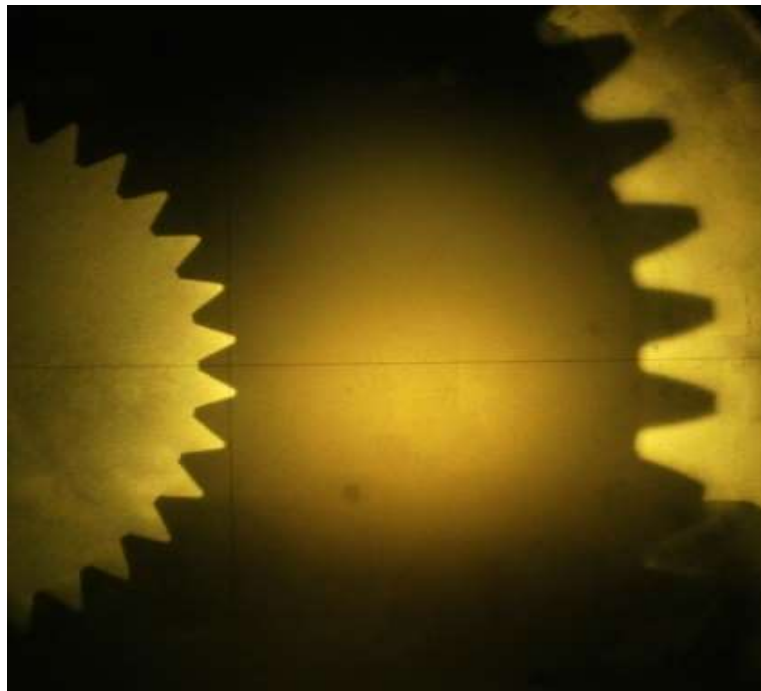


Shafts with Serrations and Splines

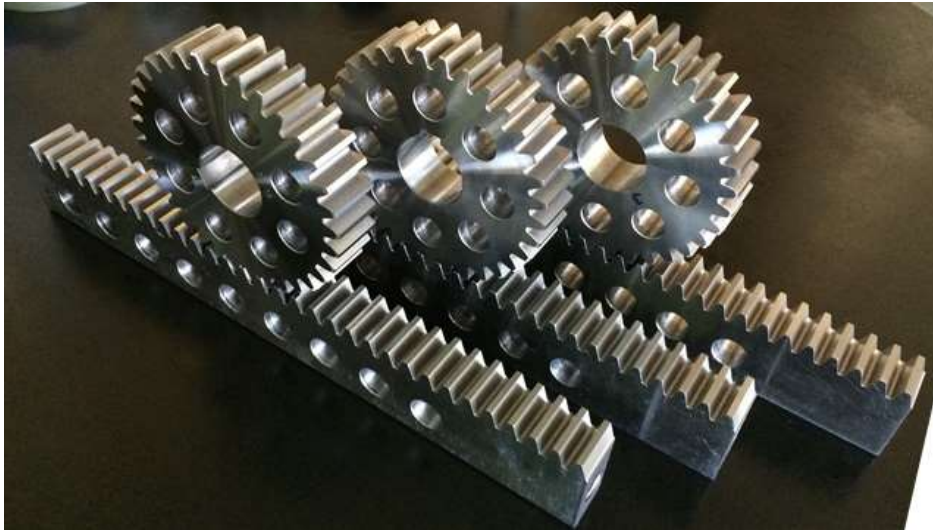
(Relation of Blind Tooth of serration, Drilled Hole and Straight Spline – all in different planes)



Gear Wheel with Hub for customer at Germany (There is relation between Internal Serration and External Teeth)



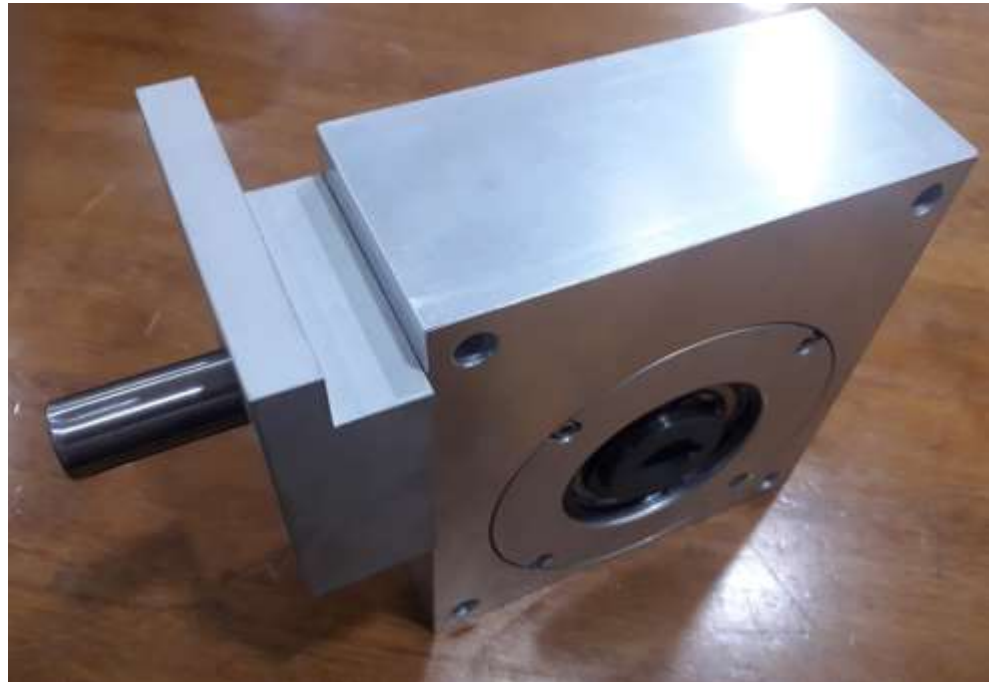
Gears & Racks for R&D Activity



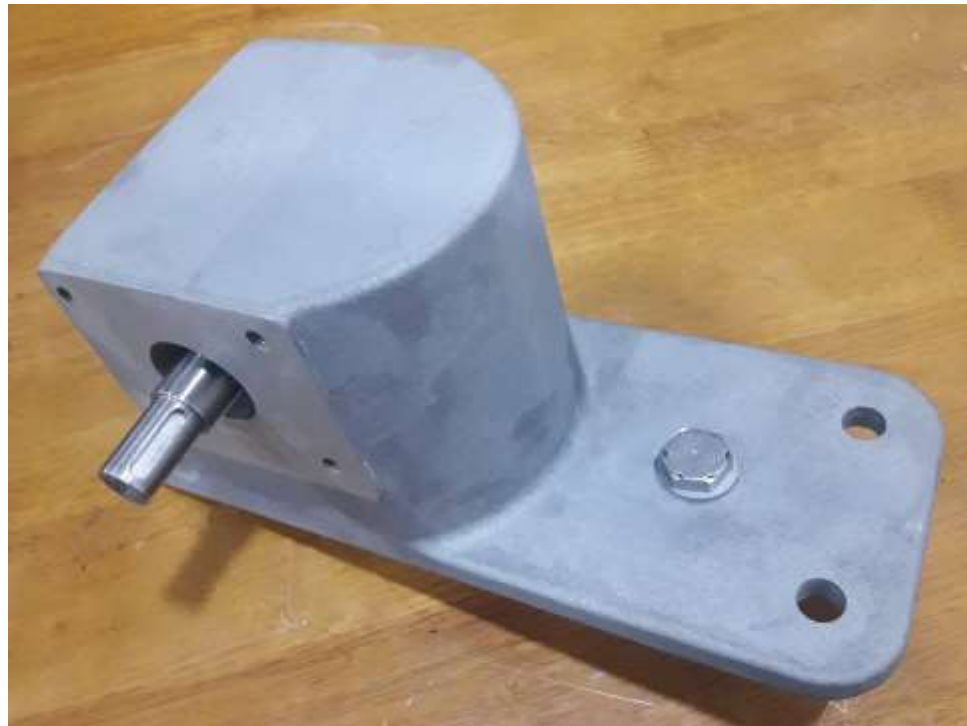
Bevel Gear Transmission Box



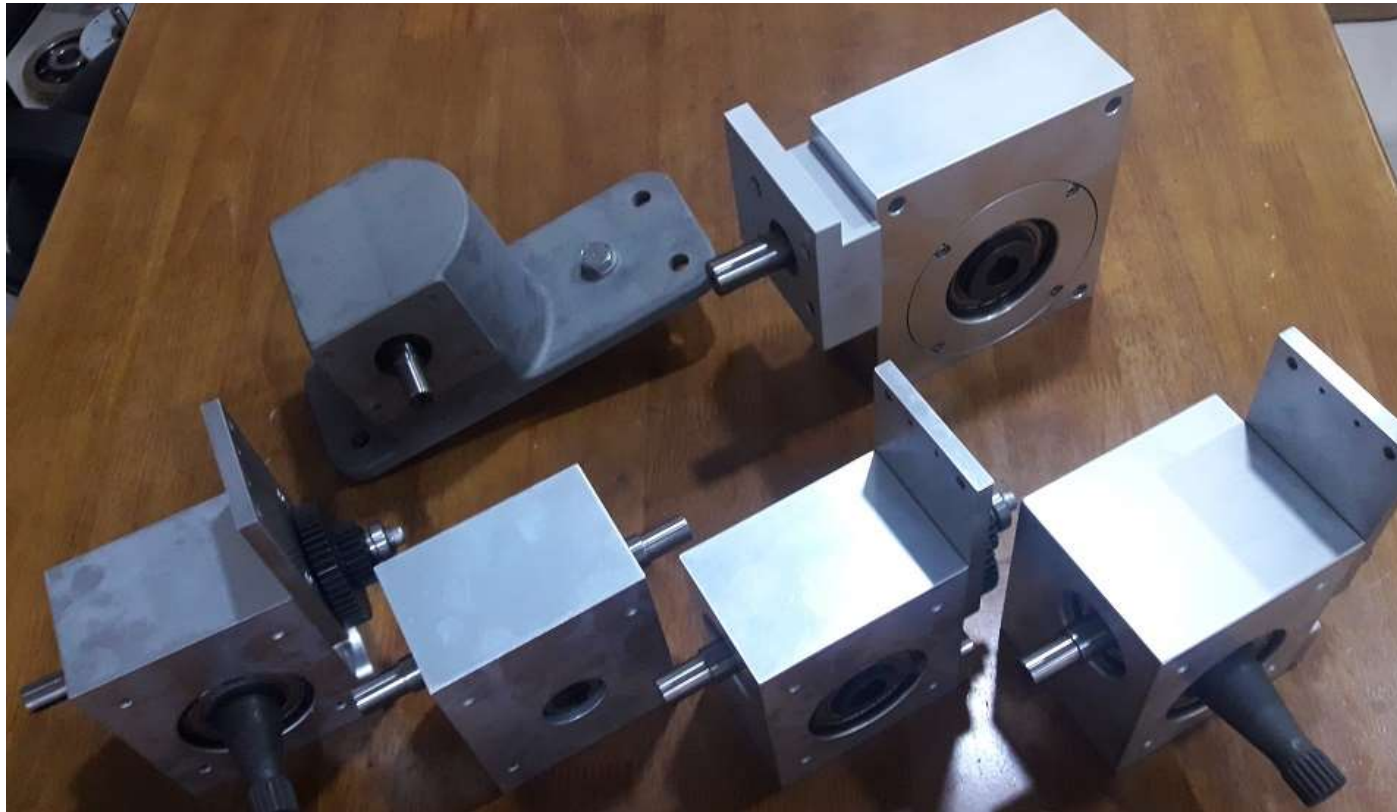
Various Gear Assemblies for Europe based customer



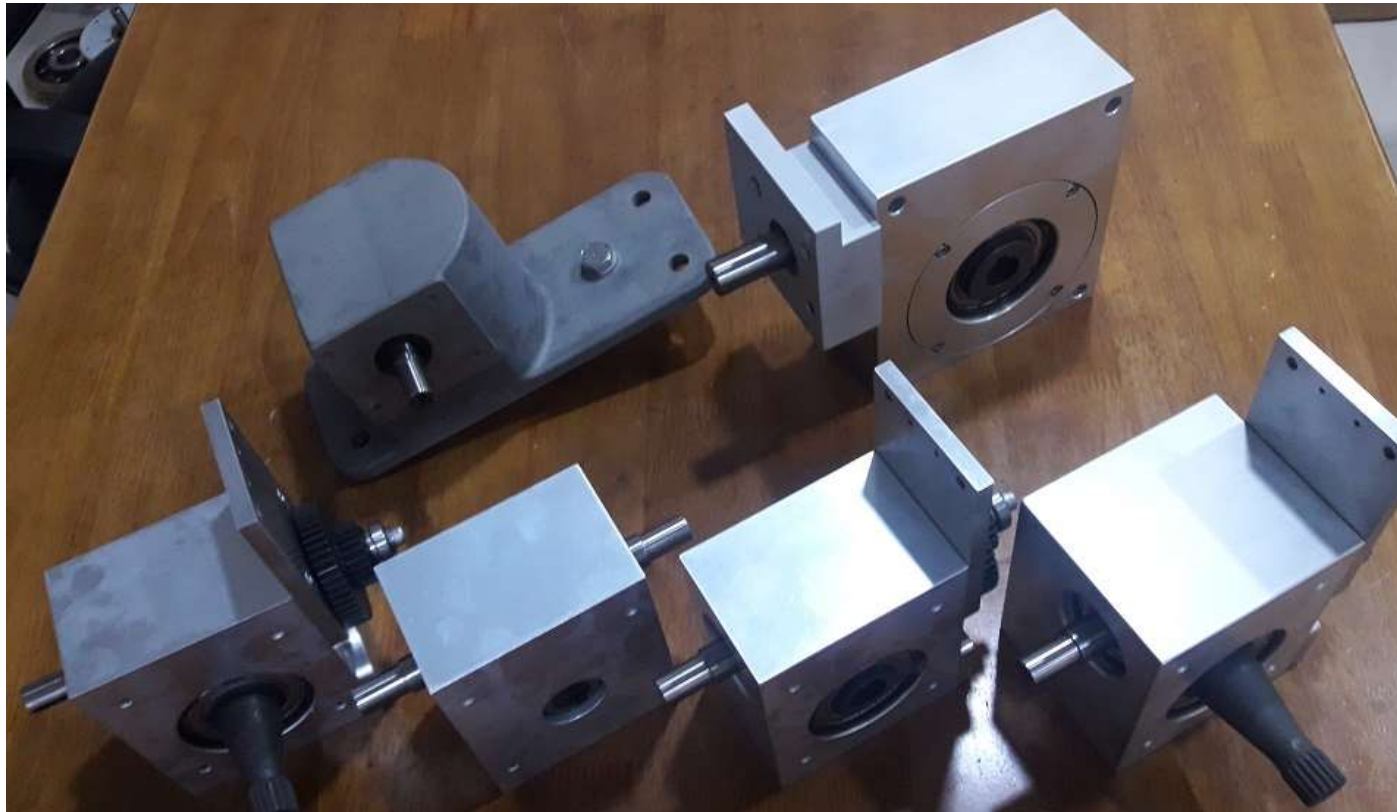
Various Gear Assemblies for Europe based customer



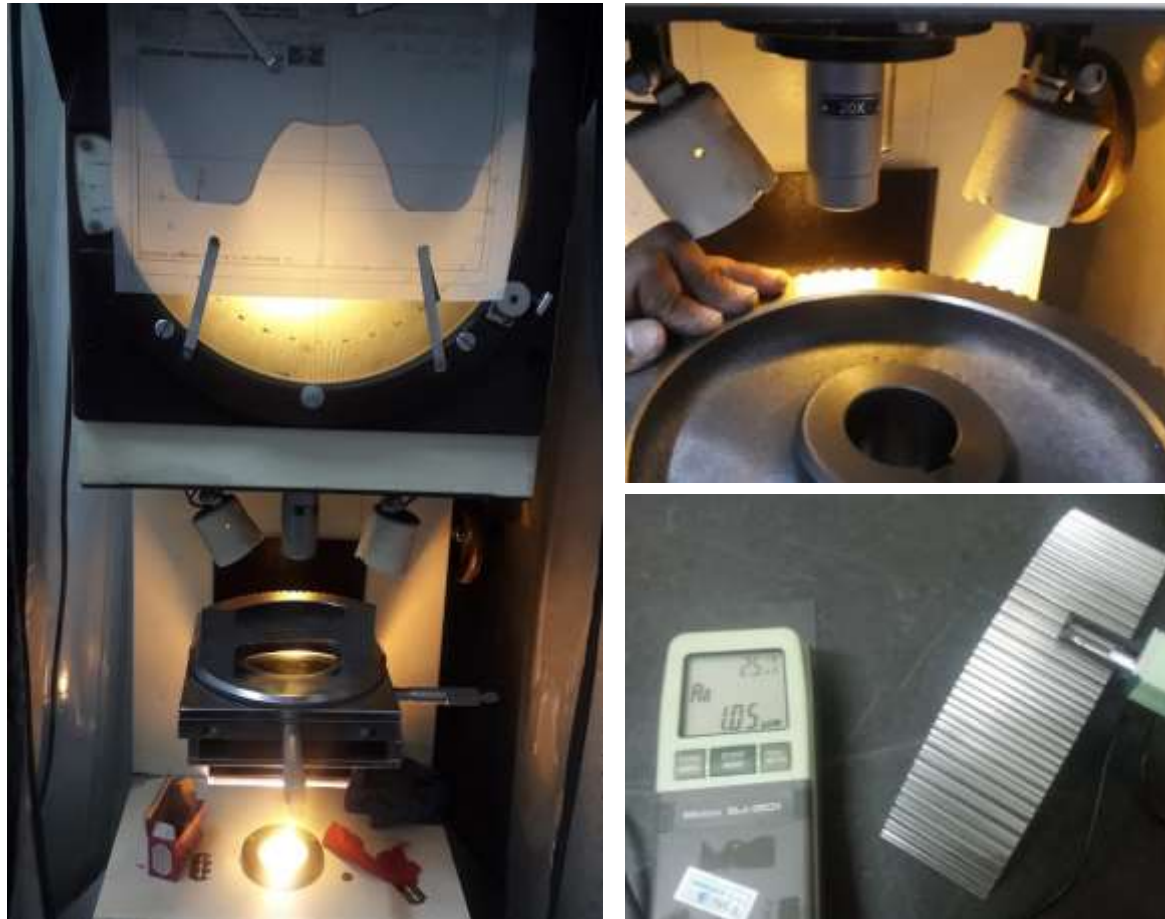
Various Gear Assemblies for Europe based customer



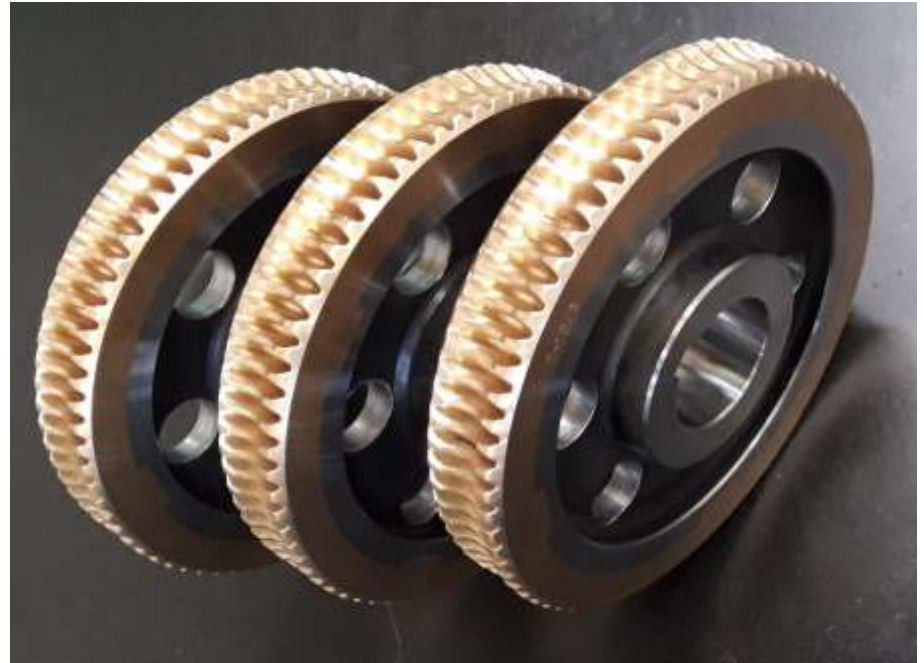
Various Gear Assemblies for Europe based customer



Development of Timing Pulleys for Europe based customer



Worm Shaft & Wheel sets for customer at Europe



Development of Gears for Defence to support Make in India Drive





Our Team:

- Proprietor and Team Leader
 - Chetan Champaneri
- Commercial & HR Activities
 - Sonal Champaneri
 - Mehul Patel
 - Manoj Sanghadia
 - Jay Shroff
- Marketing & Customer Care
 - Keyur Patel
- Purchase
 - Harshit Mistry & Bhavesh Patel
- Quality Assurance
 - Mayur Patel
- Planning & Production
 - Keyur Rana
- Sub Assemblies
 - Anjay Tamboli
- Maintenance
 - Bhagwansingh Kushwaha

In all we are team of 70+ members getting motivated to meet our targets...

Expansion & Upgradation:

Merging of Main Unit and Unit II by increasing Floor Area for better efficiency.



Expansion & Upgradation:

We have installed 3D-CMM in our QC Lab area for critical parts



- **Productivity & Sustainability:**

Adopting Lean Manufacturing Practices by using Lean Tools like 5S, Kaizan, Kanban, etc.



Larsen & Toubro appreciated for our supply of Spline Shafts and Gears for Nuclear Power Plant Projects



ABB Awarded us as **Best Supplier For Consistent Quality in 2012 & Best Supplier Exports in 2017**



We are ISO 9001:2015
Certified Company

CSR kind of Activity:

We are part of NGO, Manav Aarogya Seva Kendra With permanent projects:

- Blood Bank
- "Vatsalya"- a School for Specially abled Children (70+ beneficiary children)
- Physiotherapy Center
- Eye Donation
- Mega Medical & Surgical Camps in Tribal Area of Kaparda (yearly camp with average patients examined 2500+ & Operative 125+ every year since nine years)



Thank You



C1/14d, Killa, Pardig I D C Estate, Pardi, Pardi, Vapi, Gujarat 396125